

Golden Gardens eNews

www.californiagardenclubs.com

October 2021 Vol. 4-14

Member:

**National Garden Clubs, Inc.
Pacific Region Garden Clubs, Inc.**

President Lynne Batchelor

cgcpresident@cagardenclubs.org

1st Vice President Carol Vallens

2nd Vice President Adele Kelly

3rd Vice President Marlene Kinney

Recording Secretary Gail Vanderhorst

Corresponding Secretary Milly Benson

Financial Secretary Rita Desilets

Treasurer George Perko

Parliamentarian Greg Pokorski

Communications Director Kathy Taylor

Golden Gardens eNews

goldengardens@cagardenclubs.org

Editor Launa Gould

Assistant Editor Jane McKee

Proofreader Nancy Compton

Proofreader Robin Pokorski

In this issue:

President's Message 1

Calendar 2

Bylaw Amendment Request 2

Chrysanthemums 2

Big Basin Recovery 3

Sequoia Fires 3

Kids Growing Strong 4

Youth Poetry Contest 4

Succulent Legislation 5

Awards 6

Penny Pines 6

Award Winning—Golden Gardens eNews

- Published monthly
- Distributed electronically FREE
- To subscribe or view past issues:
californiagardenclubs.com/cgcinewsletters
- **Submit articles by 20th of month.**
- Distributed during first week of month.



Happy Halloween Gardeners!

Isn't it unbelievable that fall is here already? This is the time of year that living in Southern California (where it has been unseasonable hot) just doesn't

measure up to the cool temperatures and colorful fall foliage many of you are enjoying.

Thanks to everyone who has included me in your newsletter distribution. I love seeing the variety of programs and events happening across the state. You are to be congratulated for making progress despite the limitations imposed by Covid. I hope to attend more in-person and online events with you, so please do invite me.

As you know, our CGCI fall board meeting will be virtual. If you have not already registered to receive the link to join us (October 18-22), please do so. Club presidents, Club treasurers and all Board Members have received the call.

I recently attended my first National Garden Clubs (NGC) convention. Although planned as an in-person event, it was switched a month ago to a virtual one. First Vice Presidents were invited to attend the President's meetings and it was wonderful that Carol Vallens was able to participate. The NGC board has obviously been working hard virtually as there was so much business to be approved including changes to bylaws and standing rules as well as numerous recommendations. Many of the recommendations concerned NGC schools including that all exhibits and judging credits required to attend Flower Show School Symposium are suspended until December 31, 2022. We will be the beneficiaries of this as Emily Troxell is organizing a symposium during my term. In addition to the business meetings, we had three very informative and practical "play dates" one on the NGC website, one on sponsorships and of course the best one of all on leadership presented by our own Robin Pokorski. There was also a fascinating talk by the author of the *Drunken Botanist*. I am looking forward to the next NGC meeting which will be in-person in Orlando, FL.

Enjoy the extra daylight,

Lynne



CGCI Calendar

californiagardenclubs.com/calendar

- **October 18-22, 2021**
Fall Board Meeting - Virtual
- **February 7-9, 2022** Winter
Board Meeting Airtel Plaza
Hotel, Van Nuys Chairman:
Rita Desilets
- **June 6-10, 2022**
CGCI Convention Handlery
Hotel, San Diego Chairman:
Sharon Tooley

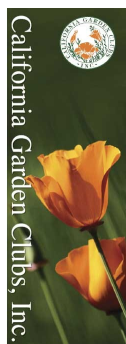
CGCI Schools Chairmen

Environmental: Nancy Compton
ncompton43@att.com

Flower Show: Sandra Graff
sandgrf@sbcglobal.net

Gardening: Greg Pokorski
gregpokorski@earthlink.net
Nov. 9, 10, 2021. Virtual
See NGC website for details
Contact this chairman if attending.

Landscape Design: Alexis Slafer
aslafer@ca.rr.com
January 15-16, 2022
February 12-13 and 26-27, 2022
March 12-13, 2022
Host: Valley Lode District
Chairman: Bernie Hendrix
209-402-2351
schoolsvld@gmail.com

Promotional Materials

- Banners
- Bookmarks*
- Rack Cards*
- Pamphlets*

* Free materials

Online request forms

Request for Proposed Amendments to the Bylaws

by Adele Kelly, CGCI 2nd VP and Bylaws Committee Chairman

Bylaws are the foundation from which an organization is built.

Read though our bylaws and standing rules in your yearbook and send me any proposed amendments by Nov. 1, 2021. cgc2ndvp@cagardenclubs.org

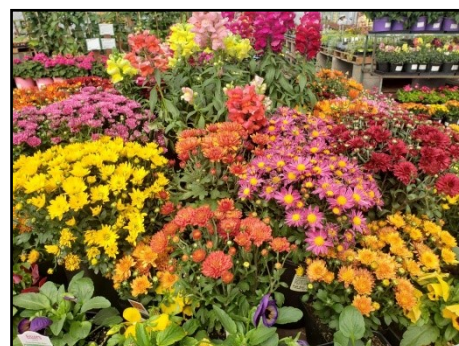
Colorful and Hardy, Chrysanthemums Greet Autumn

by Nancy Compton, River Valley Garden Club

As the days become shorter and the nights a bit cooler, the colorful and cheerful chrysanthemum takes center stage, reminding us of falling leaves, home-coming, and the beginning of a chillier season. A staple of fall gardens, mums are a national symbol of autumn abundance, as they add a gorgeous pop of color to any landscape.

Today considered native to East Asia and Northern Europe, most species originated in China as far back as the 15th century where they were renowned as one of the Four Gentlemen in Chinese and East Asian art.

Chrysanthemums entered the horticulture scene in the U.S. in 1798 when Colonel John Stevens imported a cultivated variety known as Dark Purple from England. The introduction of this beautiful flower was part of an effort to grow attractions within Elysian Fields in Hoboken, New Jersey. Elysian Fields in Hoboken is believed to be the site of the first organized baseball game (June 19, 1846) giving Hoboken a strong claim to the birthplace of baseball, although baseball's origin has become a contentious and enduring debate that includes Cooperstown, New York, and the streets of Brooklyn. It is good to know that both baseball and chrysanthemums have survived through time and are still providing joy to gardeners, ball players, and the public in general.



Chrysanthemums are happy to survive in most soils, but they thrive in well-draining soil with consistent moisture which may be a problem in some areas of our state that have hard, dry soil. Many gardeners overcome this by growing their mums in containers, often contrasted with other plants to make a showy autumn arrangement. To encourage root growth, water containerized mums from the bottom and add water-soluble fertilizer weekly.

Just like beach-goers, chrysanthemums just love the sun. Although they technically require only six hours of sunlight each day, the more light they receive, the more vigorous their growth will be. You can even plant or set your container near artificial lights, such as security or porch lights to provide what they will interpret as additional daylight.

And finally, chrysanthemums are cheerfully affordable and come in an enormous variety of colors. Mums are a perfect gift for any occasion and add much joy and color to our world.

CGCI Programs & Projects

Go to californiagardenclubs.com
for details

- **Membership**

Chairman: Marlene Kinney
315 Windmill Canyon Place
Clayton, CA 94517-1904

- **Insurance**

Chairman: Shane Looper
213 Carmelo Lane
South San Francisco 94080-204

- **Group Tax Exemption Program**

Chairman: Sue Bennett
7560 Shelborne Drive
Granite Bay 95746-8617
gtep@cagardenclubs.org

- **Penny Pines**

Chairman: Nina Blonski
Checks to US Forest Service
Online form [Penny Pines](#)

- **President's Project 2021-2023**

Chairman: Robin Pokorski
[President's Project](#)

- **Scholarship Applications**

Chairman: Martha Smyser
[CGCI Scholarship Fund](#)

- **Black Point Garden**

Chairman: Shane Looper
213 Carmelo Lane
South San Francisco 94080-204
[Black Point Garden](#)

- **Donations** to the following projects can be made online or mailed to:

California Garden Clubs
P.O. Box 823

San Fernando, CA 91341-0823
[Anza-Borrego Desert State Park](#)
[Blue Star & Gold Star Memorials](#)
[CGCI Endowment Funds](#)
[CGCI Scholarship Fund](#)
[Conejo Valley Botanic Garden](#)
[Sempervirens/Big Basin Funds](#)

Sempervirens Fund: Coast redwoods—*Sequoia sempervirens***Big Basin Redwoods State Park**

by Judy Unrine, Co-chairman

Because of the generous donations of CGCI members, work is being done to salvage our beloved Big Basin Redwoods State Park.

Many of you sent donations to match that first \$5000 challenge, and then, when a second challenge of \$5000 matching funds was offered, the money poured in. You matched that \$5000 too. You made it possible for CGCI to donate a total of \$25,000 to the Big Basin Recovery Fund. You showed how CGCI members can make a difference.

With so many devastating fires threatening Redwoods in our state and region Big Basin Redwoods State Park might seem insignificant. So why should your donations support Big Basin Redwoods? CGCI has supported the redwoods in this state park for 48 years. We adopted this park in 1973. We are part of its history. It is important to the State Park Foundation to continue our support of California's first state park.

Donation forms are on CGCI's website, californiagardenclubs.org. Send check to PO Box 823, San Fernando, Ca. 91341-0823. Please include your phone, email, and address. Note either Sempervirens Fund or Big Basin Recovery Fund on memo line.

**Sierra Nevada's "Giant Forest" Sequoia Trees Threatened**

The Los Angeles Times reports the Colony and Paradise fires ignited by lightning strikes threaten Sequoia National Park's 2000 giant sequoia trees and infrastructure. As of Saturday, September 19th, the two fires had merged.

The National Weather Service issued a red-flag warning for the weekend. The combination of meteorological conditions of very low relative humidity and strong wind gusts could lead to extreme fire behavior.

Steven Bekkerus, a spokesman for U.S. Forest Service, reports, "This is one of the highest priority fires in the country." Crews have been working to prepare the Giant Forest for fire by foil wrapping the trees and raking vegetation from around the base of the trees. Trees can survive a wildfire if just 5% of the crown remains unscorched. However, the hot, dry conditions we have had can leave the trees more vulnerable.

Last year the Castle Fire burned through 20 of the 70 groves in the Sierra Nevada. It burned with such intensity that it caused the crowns of some trees to combust and destroyed their cones. Between 7,500 to 10,000 Giant Sequoia Trees were killed, 10% to 14% of the world's natural population.

Sempervirens Co-chairmen: Rosa Radicchi Radicchi@aol.com
Judy Unrine judygarden01@gmail.com

Kids Growing Strong

by Lisa Cosand, Youth Coordinator
20 Years of Inspiring Young Gardeners

In 2001, the late CGCI President Maryanne Lucas established **Kids Growing Strong**, a non-profit program to excite and educate children about their surroundings as related to the benefits of growing their food.

CGCI former President Sue Bennett leveraged what Maryanne did and in 2015 created gardening kits focused on different themes to use for her Presidents Project: *Encouraging Future Gardeners*. The kits feature seeds, activity cards and supplies. For example, the herb kit includes a fabric pot and seeds for chamomile and other herbs. The "Pollinator Paradise" kit contains flower seeds and "good bug" masks for kindergartners to make. All five kits come with a wealth of gardening how-to and fun facts designed to pique youthful interest.

Five kits were created with the intent the child, along with some parent supervision, could grow their own food – at home. The kits contain cards with the information on what was in the kit and what was needed to complete the tasks. Two of the kits contained black fabric bags to plant in. Children were able to take the kits home and involve the family in the project. This creates responsibility of caring for the plants and no need to worry about watering at school over the weekends.

Herbs Kit. Includes seeds for planting herbs.

Green Machine Kit. Includes a variety of lettuce/greens seeds.

Watch-Us-Grow Kit. Appropriate for preschoolers and kindergarten.

Plant a Rainbow Kit. Includes three different seed cards and ideas for creating recycled planting containers.

Pollinator Paradise Kit: Includes "Seeds for Butterflies," or "Seeds for Pollinators".

When you or your garden club is asked about a youth presentation, this is a great series to consider. The beauty of the series is that each kit can be presented in one session. This gives you choice as to what to present or hold several sessions and present all of them. Each kit costs \$1.50 so ask the club president if this could be funded under the youth gardening line in the budget.

Kids Growing Strong is still going strong. Sue Bennett is presently the Director and is available to speak to your club about the program. Check out the web site <https://www.kidsgrowingstrong.org> and then let her know how many kits you will need for a presentation. Sue is also the National Garden Clubs (NGC) and Pacific Region Garden Clubs (PRGC) Youth Coordinator spreading her expertise and enthusiasm around.

Happy Gardening,



Youth Poetry Contest Deadline, December 1

by Lisa Cosand

Time to hang out with the kids and encourage some poetry writing for the Garden Club contest.

This year the theme is:

Sing with the Songbirds – Exploring the Glory of Nature

Check the web site for the entrance information and rules. [Junior Poetry Contest](#).

We would like to receive more poems in the 5th through 9th grade categories.

If you have questions, please contact Lisa Cosand at sflowerplc@aol.com

P.S. If poems aren't your thing, check out the essay contest.

Awards, Honors & Recognition

californiagardenclubs.com/forms

- Awards Program**

Chairman: Pat Claves

• californiagardenclubs.com/awards

- Business Commendations,**

- Long-Term Certificates, and**

- Member Award of Distinction**

Chairman: Judy Bates

jlbates5900@sbcglobal.net

Online request forms

- California Consultants Council**

Chairman: Sue Bennett

Sue_c_bennett@att.net

- Life Memberships**

Chairman: Carlotta Wixon-Welker

lifemember@cagardenclubs.org

Online request form



National Garden Clubs, Inc.

President 2021-2023

Mary Warshauer

Theme: "Plant America-Play Outdoors"

NGC Headquarters:

4401 Magnolia Avenue

St. Louis, MO 63110-3492

Telephone: 314-776-7574

Fax: 314-776-5108

Email: headquarters@gardenclub.org

Publication: *The National Gardener*

Website: gardenclub.org



Pacific Region Garden Clubs, Inc.

Director: 2021-2022

Lana Finegold

Email: lanafinegold@msn.com

Publication: *WACONIAH*

Website:

PacificRegionGardenClubs.org

Are you receiving *WACONIAH*, the newsletter of the Pacific Region?

If not, you can subscribe here

californiagardenclubs.com/cgcnewsletter

Protecting Succulents through Legislation

by Nancy Compton, Government/Legislation Chair

A woman waiting in a small post office in California's northern coastal town of Mendocino was standing in line behind a man who was sending sixty boxes overseas. This, naturally, took a long time, and she soon became annoyed, finally asking him what was in all these boxes. "Shhhh," he replied. "Something very valuable." When she asked him where he got something so valuable, he pointed to the coast.

Her suspicions now rising above her annoyance prompted her to step outside and call the local Fish & Wildlife Office wherein she relayed this episode to a game warden. The warden suspected that the items were abalone, but when he visited the post office and opened one of the boxes, he was incredulous. Poached succulents? Really?

The box was crammed full of *Dudleya farinosa*, more commonly known as "bluff lettuce" or "powdery liveforever." These succulents, which resemble echeveria, form a basal rosette of wide, pointed spade-shaped leaves which are generally very pale green, and often have edges or tips of bright colors, usually red.



What has been driving this poaching is the emerging demand for *Dudleya* in Asia where a mature plant can command a price of as much as one thousand dollars in the underground economy. Apparently poachers will typically book a flight from Korea or China, fly in, rent a car, go to a moving and storage center and buy a large number of boxes, and then begin their drive up the coast. They harvest the plants, process everything in a hotel room, and ship them back to Korea, China, and other Southeast Asian destinations.

Taking the lead on protecting this succulent, the California Native Plant Society worked with Assembly Member Christopher Ward (D-San Diego) to create AB 223 – the first California bill specifically drafted to protect plants from poaching. This bill would make it unlawful to uproot, remove, harvest, or cut *Dudleya* from land owned by the state or a local government, and would make it unlawful to sell, possess with intent to sell, transport for sale, or export it for sale.

Assembly bill 223 (AB223) is now sitting on the Governor's desk, and unless he has a passionate interest in succulents, may languish as other, presumably more pressing bills, are added to the pile.

As gardeners and stewards of our public lands, we need to champion environmental responsibility by contacting the Governor's office in Sacramento at (916) 445-2841, or to make it easier, just Google "Governor Newsom's Office" and an email form will pop up. You can do it on your phone. Let the Governor know it's imperative that we protect our native plants to ensure the integrity of our wildlife and natural outdoor environment, as the ultimate health of our state and our planet depend on it.



Nina Blonski, Chairman

pennypines@cagardenclubs.org

[Penny Pines](#)

District	Club / Donor	Honor or Memory / To Whom	Amount
Buttes	Garden Club of Colusa County		\$68.00
Channel Islands	Westlake Village GC	H/M (H) Jean Reiley (M) Hazel Kenzer	\$272.00
Diablo Foothills	Clayton Valley GC	Honor Judy Disbrow	\$68.00
Diablo Foothills	Discovery Bay GC	Rosemary Harrison Memory Virginia Brown	\$68.00
Diablo Foothills	Blackhawk Bloomers GC	Honor Lynn Negovetich, Cam Modersbach, Celia Maddox, 20-21 Blackhawk Bloomers GC	\$272.00
Diablo Foothills	Livermore-Amador Valley GC	Memory Karl Pemper	\$68.00
Golden Foothills	Chicago Park GC	Loretta Stanley Memory Lori Ann Frank	\$68.00
Orange	De l Norte GC	Honor Paul & Eleanor Barbour	\$136.00
Roadrunner	Hesperia GC	Memory Johnny Sampson	\$68.00
San Fernando Valley	Southern California GC	Memory Marcia Smith	\$68.00
San Fernando Valley	Burbank-Valley GC	Memory Peter Culotta	\$68.00
Valley Lode	Sierra Madre GC	Memory Elsin Dean	\$68.00
Valley Lode	Sierra Madre GC	Memory Leone Laird	\$68.00
Valley Lode	Stockton GC, Inc.	Honor Future Guest Speaker 2021-2022	\$68.00

2021 CGCI Awards Program

by Pat Clayes, Awards Chairman

The following awards must be postmarked by **December 1, 2021** to the judging chairmen:

#1 Community Impact, #2 Blue Star, #3 Civic Development, #6 Memorial Planting, #11 Achievement for Single Event, #14 Garden Therapy, #16 Membership Promotion, #19 National Garden Week, #20 Backyard Habitat, #21 Conservation Projects, #22 Container-Grown Vegetable, #23 Home Garden, #25 Operation Wildflower, #26 Pollinator Education, #28 Environmental Event, #29 Raised Bed Gardening, all Flower Show Awards (except #33, #34, #36, #37), #50 Newsletters, #51 Publications, #52 Social Media, #53 Website, #54-55 Yearbooks, #61 Youth Sculpture Contest, #62 Youth Poetry Contest, and #65 School Garden. All other awards must be postmarked by **January 10, 2022**.

See the 2021 Awards Manual for deadlines and specifics: [Awards Manual](#)

For all evaluation forms, see: [Evaluation Forms](#)

The judges will use the evaluation forms to judge your entry.

If you have any questions, please contact me at patclayes@aol.com. I am here to help you, your club, and your district be recognized for your hard work and efforts on behalf of California Garden Clubs, Inc., Pacific Region Garden Clubs, Inc. and National Garden Clubs, Inc.



Fact Of The Day:

Why Bananas Are Curved

Negative geotropism is to blame for why bananas are curved.

This means they are growing against gravity.

They grow towards the sun as opposed to towards the ground.

