



THE SEQUOIA



EUREKA SEQUOIA GARDEN CLUB MONTHLY NEWS

A CGCI & NGCI AWARD-WINNING NEWSLETTER



PRESIDENT'S MESSAGE: KAREN BURGESSER

Once Spring has officially returned, gardeners turn their attention to new plans and plants for their April gardens. It is also time to make difficult decisions about removing a favorite plant or tree that has been in the garden for years. Such was the case in my garden as I realized it was finally time to say goodbye to the pittosporum tree that graced the corner of my yard. Even though it was not healthy, tiny, fragrant, deep-purple flowers still bloomed. The leaves were green and the branches provided shelter for many small birds, including hummingbirds. Over time, the tree, about 15 feet tall, had developed an enormous polypore, aka shelf fungus, at the base of the trunk. This was an indication that the fungus was slowly eating away the core of the tree. The internal damage was not visible, but the tree was no longer healthy. I knew it was time to say farewell and remove the tree. Now I will plant something new as the April garden renews.

ESGC's April 21, 2023 program features new member, Kathleen Costa, who will discuss "Getting to the Root of the Problem" - Basic Techniques of Plant Disease Diagnosis.

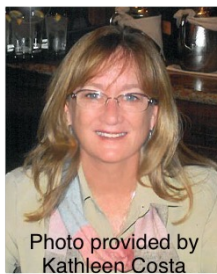


Photo provided by
Kathleen Costa

Kathleen, a graduate of Cal Poly, San Louis Obispo, worked as a plant pathologist for 38 years. During her career Kathleen was a technician in the Plant Pathology Laboratory for the California Department of Food and Agriculture, then as Nevada State Plant Pathologist for the Nevada Department of Agriculture.

Later in her career she was a CDFA Field Plant Pathologist, inspecting plant materials and providing training on all aspects of plant diseases. As a Primary State Plant Pathologist

for CDFA she served as an advisor and representative of the Department on issues concerning plant diseases. She has worked on the disease known as Sudden Oak Death, caused by the pathogen *Phytophthora ramorum*, and other newly emerging pathogens. Recently retired from her busy career, Kathleen plans to continue working with people on plant problems and best management practices for landscape industry related businesses.

Kathleen will identify the steps needed to determine the cause of plant decline, be it disease or other causes. She will discuss pathogens as examples of the types of diseases and present the steps, along with good reference materials, to help gardeners "get to the root of the problem".

Note: The field trip to Ohana Organics at Redwood Acres has been rescheduled for June 16th.

HORTICULTURE NOTES: GEORGINA PACE CALIFORNIA PITCHER PLANT

Humboldt County is home to the California Pitcher Plant (*Darlingtonia californica*), also known as the cobra lily. First identified on an expedition near Mt. Shasta in 1841 by botanist J.D. Brackenridge, the pitcher plant was later identified by John Torrey in 1853 who named it after botanist William Darlington.



Native to parts of northern California and southern Oregon, these carnivorous plants thrive in acidic bogs and seepage slopes where cold water flows and circulates. Like many carnivorous plants, cobra lilies have adapted to a nitrogen-poor

habitat and supplement their nitrogen requirements by attracting and feeding on insects. Its hooded pitcherlike leaves resemble a striking cobra and its purple-red appendages look similar to a snake's forked tongue or set of fangs. Unlike other pitcher plants, the cobra lily does not appear to produce digestive enzymes and instead relies on bacteria to break down its prey.

To see a pitcher plant, check out the new **Bear and Coyote** exhibit nearing completion at the **Sequoia Park Zoo**. All efforts are being made to use as many California native species as possible, including several pockets of California Pitcher Plant along the pond and pathway.

Resources: Update from Sequoia Park Zoo via 'eChatter' on March 4, 2023. And the following websites: carnivorousplantresource.com, Calflora.org, [Resource Britannica](http://Resource.Britannica), and stateparks.Oregon.gov.

Editor's Note: *If it so happens carnivorous plants are your thing, the Humboldt Orchid Society Spring Show, held at the Redwood Arts Association (600 F Street, Eureka) on April 22 from 10am to 5 pm, will feature both orchids and carnivorous plants. The show is free with a suggested \$2 donation.*

INSPIRATION

No matter where you go, people say there's just something about gardening that makes them feel better. -Jill Litt

Little, meaningful daily choices - - that's how we strengthen ourselves for life's longer nights and more demanding seasons ahead.
-unknown

ARBOR DAY AT PENINSULA SCHOOL: SHELLY LUSK



On March 22 ESGC members got a break in the weather just long enough to plant an Apple Babe Apple tree at Peninsula Union School. The students did a great job of helping carry supplies and planting the tree, which was located next to the apple tree the club planted last year. We were pleased to see the first tree was holding on! The weather caused us to postpone our magnolia tree planting at Hospice of Humboldt. Watch for a new date when the weather clears up.



HAPPY APRIL BIRTHDAYS!

Jim Childs-07, Kathleen LaBelle-17
Carolyn Chambers-19, Tony Gonsalves-24

THE CALENDAR FOR APRIL

4-01 April Fool's Day
4-05 Full Moon
4-09 Easter
4-17 Pacific Region GC Convention (thru 4/20)
4-21 ESGC Meeting
4-22 Earth Day
4-22 Humboldt Orchid Society Show
4-23 Rhododendron Parade

NATIONAL, REGION, STATE, & DISTRICT OFFICERS

National Garden Club, Inc. President, Mary Warshauer;
Pacific Region Garden Clubs Director, Lana Finegold;
CA Garden Clubs, Inc. President, Lynne Batchelor;
Humboldt District Director, Maria Krenek

2021-2023 ESGC EXECUTIVE COMMITTEE

President-Karen Burgesser Secretary-Simone Taylor
Vice President-Shirley Lipa, Treasurer-Janet Biasca
Director-Janice Beach Director-Linda West
Past Pres-Maria Krenek Parliamentarian-Chuck Goodwin

EUREKA SEQUOIA GARDEN CLUB, INC.

Organized 1967, Incorporated 1977

A CGCI Blue Ribbon Club

PO Box 479 Bayside, CA 95524

[http://californiagardenclubs.com/](http://californiagardenclubs.com/eurekasequoia)

[eurekasequoia](http://californiagardenclubs.com/eurekasequoia)

esgc@cagardenclubs.org

707-845-4376

Meets monthly, 3rd Friday

Agricultural Center 5630 S. Broadway, Eureka

Annual Dues \$25

Individual, \$35 Family



**A proud member of
National Garden
Clubs, Inc.; Pacific
Region Garden Clubs,
Inc.; California
Garden Clubs, Inc.
and
Humboldt District,
CGCI**